

1

www.jardindalysse.com/



2

www.jardindalysse.com/



3

www.jardindalysse.com/



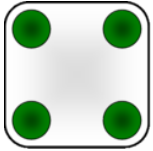
4

www.jardindalysse.com/

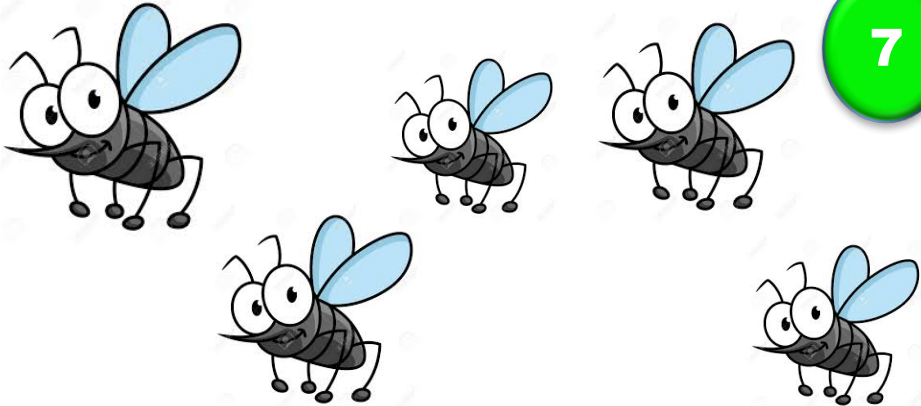
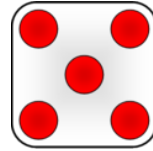
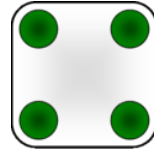
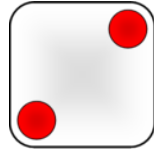




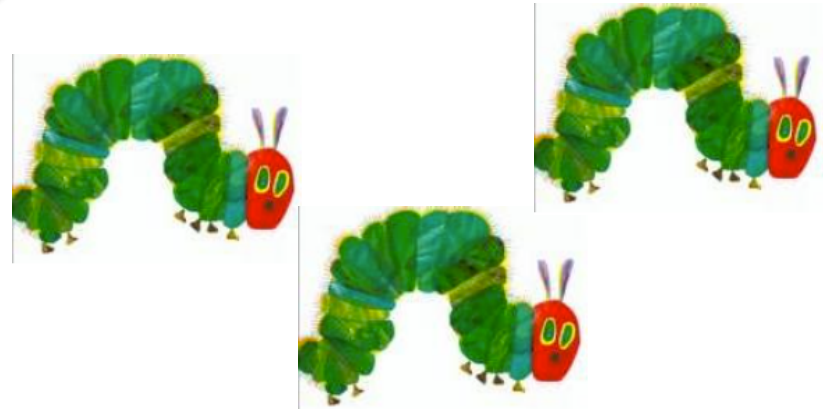
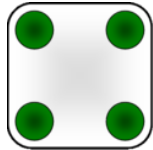
5



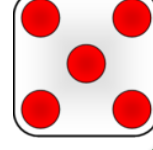
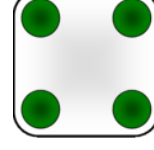
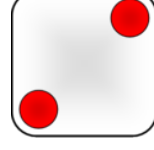
6



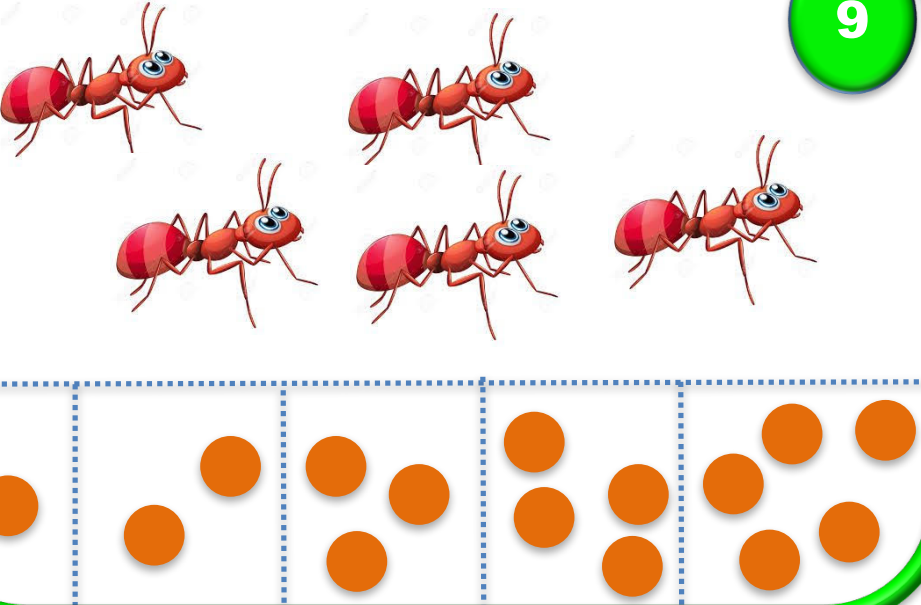
7



8

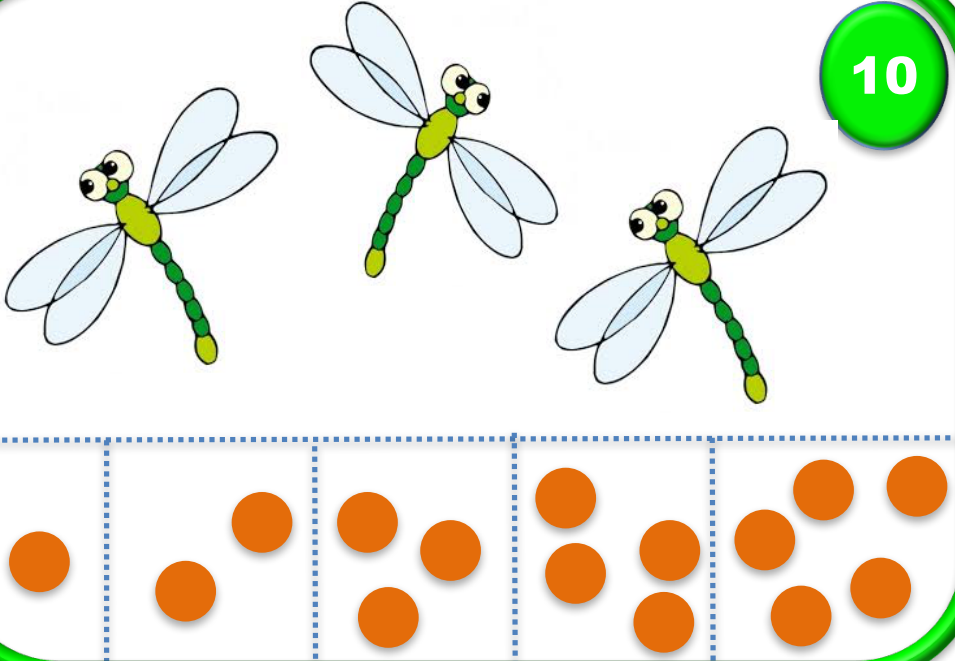


9



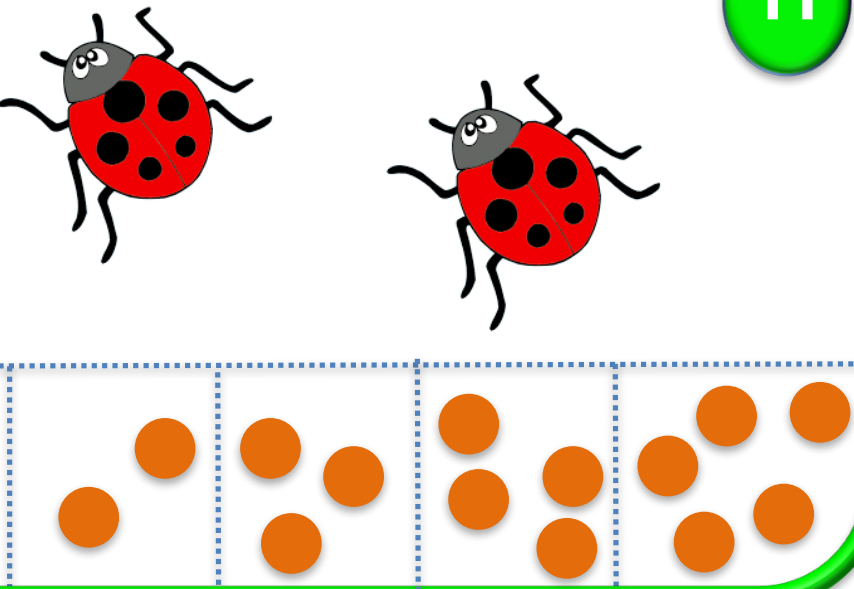
This panel features five cartoon ants, each with a red and black striped abdomen and a red head. Below the ants is a ten-frame consisting of two rows of five cells, separated by a horizontal dashed line. The top row contains five orange dots, and the bottom row contains five orange dots, for a total of ten dots.

10



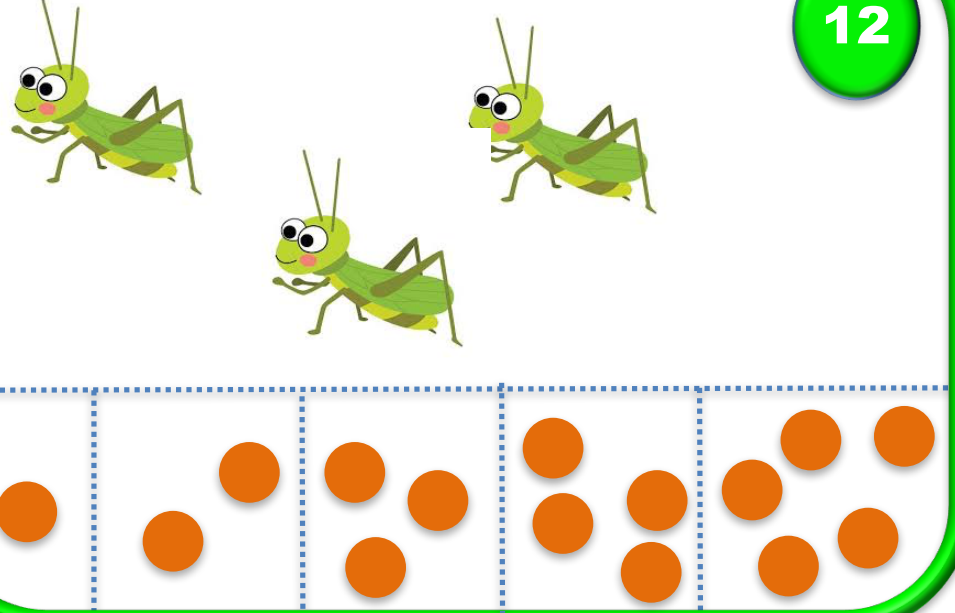
This panel features three cartoon dragonflies with green bodies and transparent wings. Below the dragonflies is a ten-frame consisting of two rows of five cells, separated by a horizontal dashed line. The top row contains five orange dots, and the bottom row contains five orange dots, for a total of ten dots.

11



This panel features two cartoon ladybugs with red bodies and black spots. Below the ladybugs is a ten-frame consisting of two rows of five cells, separated by a horizontal dashed line. The top row contains five orange dots, and the bottom row contains five orange dots, for a total of ten dots.

12



This panel features three cartoon grasshoppers with green bodies and long hind legs. Below the grasshoppers is a ten-frame consisting of two rows of five cells, separated by a horizontal dashed line. The top row contains five orange dots, and the bottom row contains five orange dots, for a total of ten dots.



13

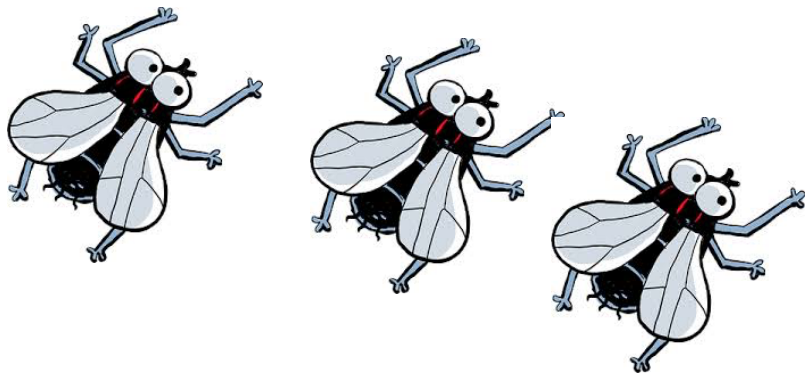
1 2 3 4 5



14



1 2 3 4 5



15

1 2 3 4 5



16

1 2 3 4 5